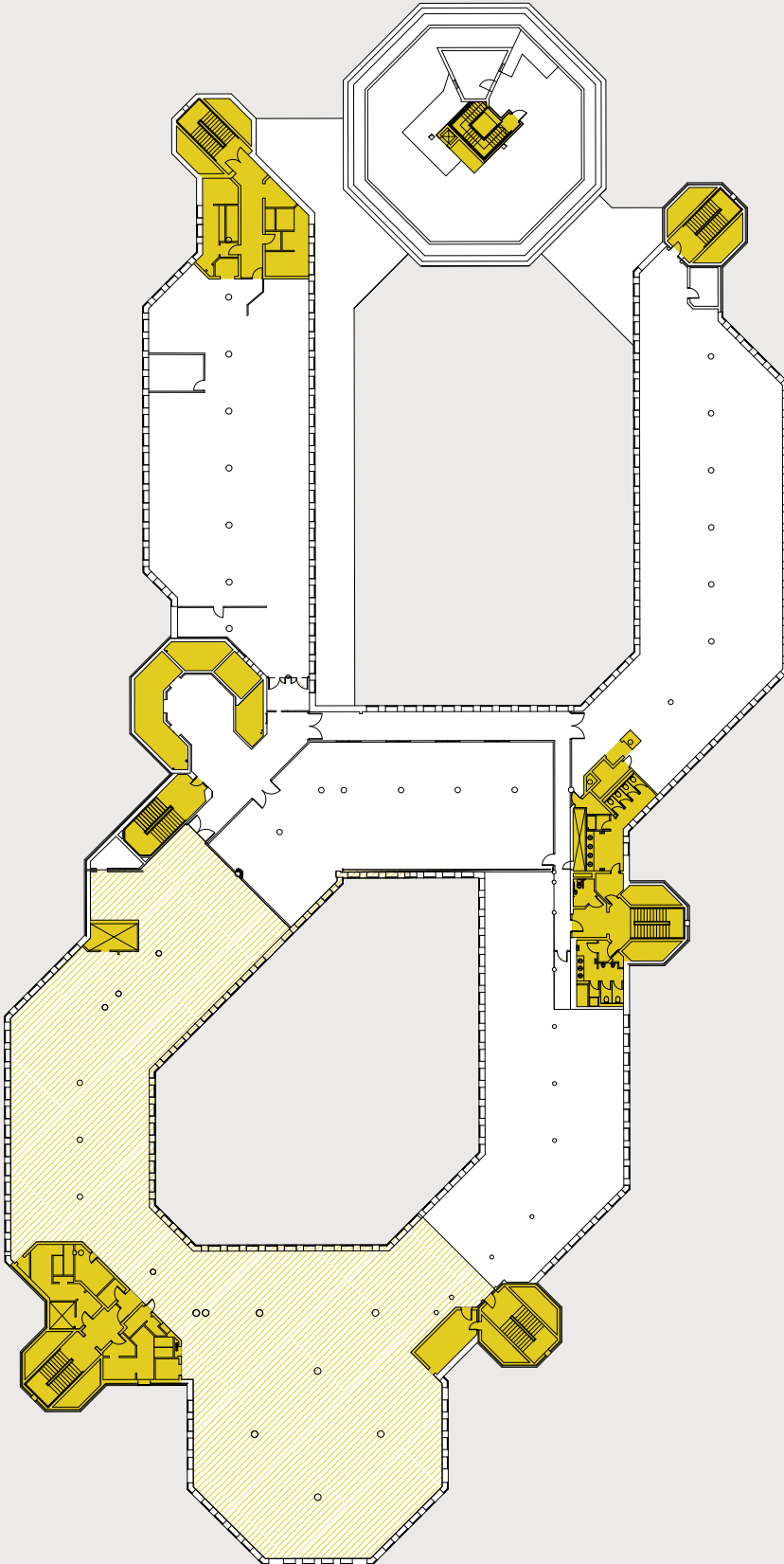


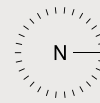
Suite M



FLOOR AREA

Suite M comprises the following approximate NIA floor area.

1,280 sq ft to 10,000 sq ft



Floor plan not to scale.
For indicative purposes only.

TERMS

Available on traditional and flexible lease length.

Rent / terms to be agreed upon application.

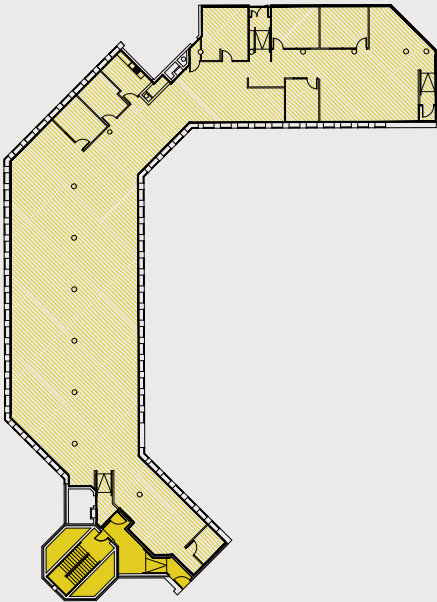
BUSINESS RATES

We advise all interested parties to make their own enquiries in this regard.

SERVICE CHARGE

Service charge levied to cover the cost of heating, cooling, reception facilities, security and building maintenance charge.

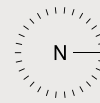
Suite C



FLOOR AREA

Suite J comprises the following approximate NIA floor area.

7,744 sq ft



Floor plan not to scale.
For indicative purposes only.

TERMS

Available on traditional and flexible lease length.

Rent / terms to be agreed upon application.

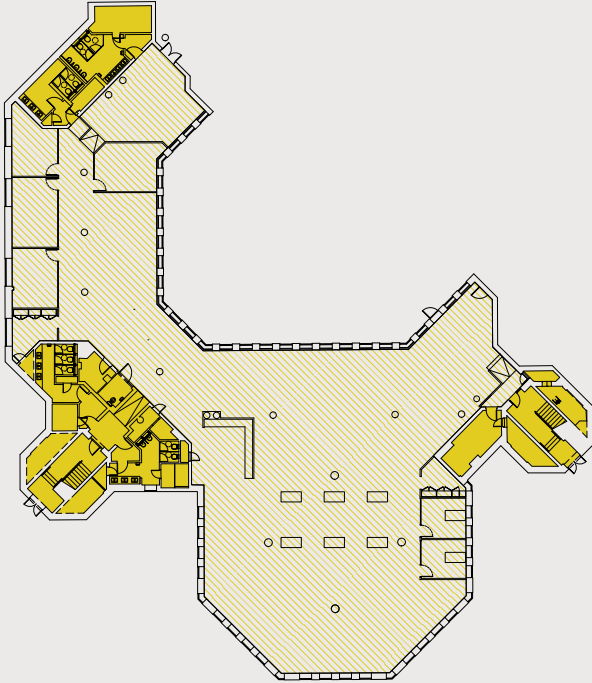
BUSINESS RATES

We advise all interested parties to make their own enquiries in this regard.

SERVICE CHARGE

Service charge levied to cover the cost of heating, cooling, reception facilities, security and building maintenance charge.

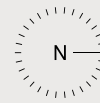
Suite J



FLOOR AREA

Suite J comprises the following approximate NIA floor area.

9,121 sq ft



Floor plan not to scale.
For indicative purposes only.

TERMS

Available on traditional and flexible lease length.

Rent / terms to be agreed upon application.

BUSINESS RATES

We advise all interested parties to make their own enquiries in this regard.

SERVICE CHARGE

Service charge levied to cover the cost of heating, cooling, reception facilities, security and building maintenance charge.